

2012

BALA

PORTFOLIO

BALA Media sponsor:
Builder



Best in American
Living Awards

2012 JUDGES

Karen Kassik-Michelson, Chair
Tony Crasi
Barry Glantz
Kay Green
William Warwick
Amy Albert

2012 COMMUNITY JUDGES

Jess Hall, Chair
Brett Hardesty
Bill Sanderson

NAHB STAFF

Jaclyn Toole
Claire Worshtil
Debra Lesesne
Debra Bassert

HALL OF FAME

In 2008, the Best in American Living Awards created a Hall of Fame to honor design professionals who have significantly impacted the residential design and construction field through their successes within their respective professions and involvement in BALA. The inaugural class features 11 honorees. Designers. Builders. Founders. We would not be here, experiencing our living environments in the way we do, if these people had not envisioned and executed the kinds of residential design advances we've enjoyed over the last 30 years. At the end of 2013, to celebrate the award program's 30th anniversary, these individuals will be joined by a new class of honorees. For more information, visit www.nahb.org/balahalloffame.

Aram Bassenian, AIA
Barry A. Berkus, AIA
Jack Bloodgood, FAIA
Roy L. Diez
Carole P. Eichen
Carl W. Lagoni, AIA
J. Carson Looney, FAIA
Stephen C. Moore, CGP
Christopher Homes
Taylor Morrison
Capital Pacific Holdings



2012 AWARD CATEGORIES

HOME OF THE YEAR

ROOM OF THE YEAR

BEST IN REGION

SINGLE-FAMILY

Detached Home up to 2000 sq ft
Detached Home 2001-3000 sq ft
Detached Home over 4001 sq ft
One-of-a-Kind Home up to 4,000 sq ft
One-of-a-Kind Home 4001-6500 sq ft
One-of-a-Kind Home over 6501 sq ft
Affordable Home
On the Boards,
Adaptive Reuse,
Green-Built Home
International,

MULTIFAMILY

Attached Home
Development up to 4 Stories, For Rent
Development 5 Stories & Over, For Rent
On the Boards,
Adaptive Reuse,
International,
Community Facility
Judges' Discretionary

REMODELING

Entire Home \$250,001 and over per unit
Addition, Indoor or Outdoor \$150,001 & over per unit
Bath up to \$50,000 per unit
Specialty Project

COMMUNITY

Neighborhood Design
Master Plan
On the Boards

SPECIALTY

Design Detail

INTERIOR DESIGN

Kitchen
Specialty or Outdoor Room



English Angel

Kiawah Island, S.C.

Photography by Dickson Dunlap

PROJECT TEAM

ARCHITECT/DESIGNER— Wayne Windham Architect,
Kiawah Island, S.C.

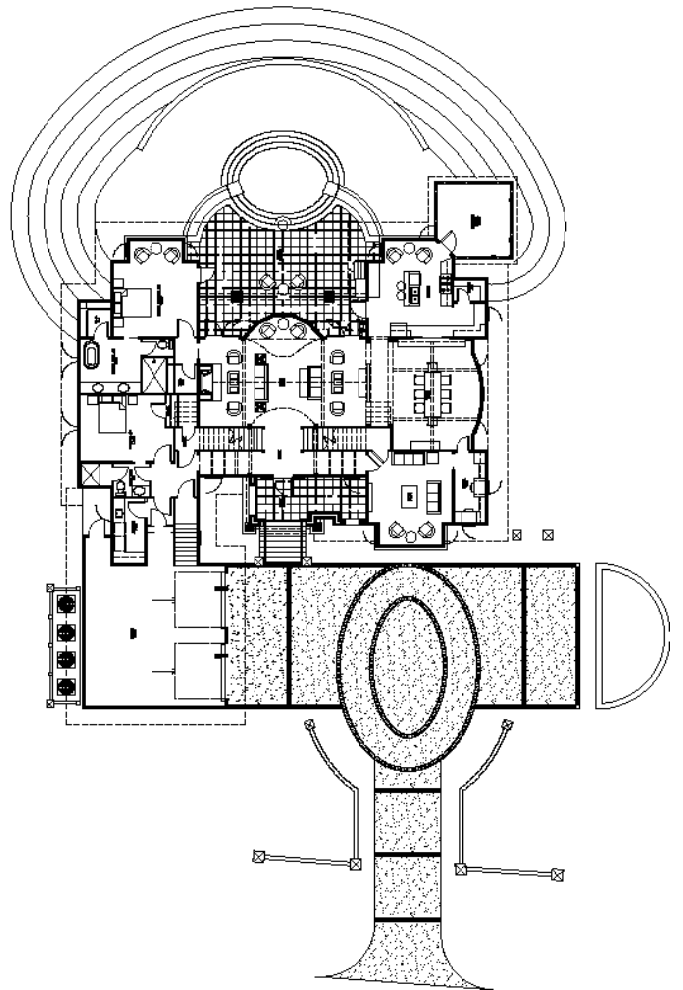
BUILDER— Buffington Homes, Johns Island, S.C.

INTERIOR DESIGNER— Kathryn McGowan, Charleston, S.C.

LAND PLANNER— Sunnyside Designs, Johns Island, S.C.

DESIGN DESCRIPTION

This Arts and Crafts style house draws from the most influential English architects of the early 20th century. Designed to be enjoyed by multiple families as a second home, this 4,900-sq-ft home contains three identical master suites, three bedrooms and six bathrooms. The bold stucco massing and steep roof pitches make a commanding presence, while flared roof lines and various detailed openings articulate the form. Inside, neutral colored walls accentuate richly stained woodwork. The timber trusses and the intersecting peak and arch ceiling open the living room to form a dynamic gathering space. Stained glass connects the kitchen and dining room. The open floor plan allows abundant light and views to the exterior, and also provides a sense of connection and functionality. A pair of matching staircases separates the two upper master suites, trimmed with custom balusters.









NCSU Chancellor Residence

Raleigh, N.C.

Photography by Dustin Peck Photography

PROJECT TEAM

ARCHITECT/DESIGNER— Marvin Malecha and Weinstein
Friedlein Architects, Raleigh, NC and Carrboro, N.C.

BUILDER— Rufty Homes Inc, Cary, N.C.

INTERIOR DESIGNER— Design Lines LtdRaleigh, N.C.

DEVELOPER— NC State University, Raleigh, N.C.

LAND PLANNER— NC State University, Raleigh, N.C.

INTERIOR MERCHANDISER— Design Lines Ltd, Raleigh, N.C.

DESIGN DESCRIPTION

This 8,000-sq-ft residence, which is home to North Carolina State University's Chancellor and his wife is nestled on a private lake with sweeping views. Because of the university's School of Architecture, the home needed to be both inspirational in design and built with sustainable practices, energy efficiency and in-state sourced Carolina products. At the same time, it needed the capability of welcoming very large groups, but needed dedicated private space for the family. That space is on the upper floor while the lower floor has 5,000 sq ft that can entertain up to 200 people comfortably either inside or outside. A catering preparation area was created for large functions, but the kitchen was also designed to be the heart of the family that lives there. Black marble counters, white cabinets, chrome fixtures and simple forms give the interior a familial feel with a historic touch. The soaring ceiling makes the kitchen airy and open. Stainless steel appliances and inset recessed panel doors complete the professional appeal of the kitchen.

SOUTH ATLANTIC

English Angel

Kiawah Island, S.C.

Photography by Dickson Dunlap

PROJECT TEAM

ARCHITECT/DESIGNER— Wayne Windham Architect, Kiawah Island, S.C.

BUILDER— Buffington Homes, Johns Island, S.C.

INTERIOR DESIGNER— Kathryn McGowan, Charleston, S.C.

LAND PLANNER— Sunnyside Designs, Johns Island, S.C.

DESIGN DESCRIPTION

This Arts and Crafts style house draws from the most influential English architects of the early 20th century. Designed to be enjoyed by multiple families as a second home, this 4,900-sq-ft home contains three identical master suites, three bedrooms and six bathrooms. The bold stucco massing and steep roof pitches make a commanding presence, while flared roof lines and various detailed openings articulate the form. Inside, neutral colored walls accentuate richly stained woodwork. The timber trusses and the intersecting peak and arch ceiling open the living room to form a dynamic gathering space. Stained glass connects the kitchen and dining room. The open floor plan allows abundant light and views to the exterior, and also provides a sense of connection and functionality. A pair of matching staircases separates the two upper master suites, trimmed with custom balusters.



MOUNTAIN

“Home Run” by Sego Homes

South Jordan, Utah

Photography by Dallin Corbridge

PROJECT TEAM

ARCHITECT/DESIGNER— Urban Design Associates, Pittsburgh, Pa.

BUILDER— Sego Homes, Lindon, Utah

INTERIOR DESIGNER— Brenda Corbridge, Lindon, Utah

DEVELOPER— Daybreak, South Jordan, Utah

LAND PLANNER— ArcSitio Design, Inc., Salt Lake City, Utah

INTERIOR MERCHANDISER— Brenda Corbridge, Lindon, Utah

DESIGN DESCRIPTION

This project's “home run” was in terms of sales pace and market success—15 of the homes were sold in the 10 weeks after it was unveiled. The site is in the town center of master-planned Daybreak. Across the street are restaurants, shops, and neighborhood services. Two blocks to the west is a light-rail mass-transit and a hospital. The plan targeted a price-sensitive buyer who appreciates these urban amenities including working professionals and young couples and includes architectural styles blending modern and traditional elements to transition between abutting architectures. The home is priced 40% below the level that most buyers seeking affordable homes would qualify for in that area, so it is a value with three bedrooms, a two-car garage and 1,655 sq ft.

BEST IN REGION

SOUTH CENTRAL

Crest Ridge

Austin, Texas

Photography by Twist Tours

PROJECT TEAM

REMODELER— Tier 1 Group, LLC, Leander, Texas

DESIGN DESCRIPTION

The homeowner for this project had to care for an elderly family member and recognized the need for an accessible master suite to address future needs and a desire to remain in the home instead of an assisted living facility. Natural lighting and existing spaces were leveraged to achieve the goal of flexibility. By eliminating the shower and tub, an ADA-compliant shower was installed, and the shower was designed around the existing skylight to provide natural lighting during the day. Motion lighting was used to prevent potential tripping hazards at night. A slip resistant tile drains quickly. Installed fixtures and features were designed for wheelchairs including an adjustable shower bar, paddle handles on sink fixtures, lowered light switches, commercial grade carpet in the master and utility area, remote control fan and lights and a washer and dryer at wheelchair height in the master bedroom.



PACIFIC

Weiss Wine Tower

Napa, Calif.

Photography by Christopher Mayer
Photography

PROJECT TEAM

ARCHITECT/DESIGNER— Dahlin Group
Architecture Planning,
Pleasanton, Calif.

BUILDER— Grassi Construction, Inc.,
Napa, Calif.

INTERIOR DESIGNER— InDesign One,
Santa Cruz, Calif.

DEVELOPER— Joel Weiss, Fremont, Calif.

LAND PLANNER— Dahlin Group
Architecture Planning,
Pleasanton, Calif.

INTERIOR MERCHANDISER— Thomas
Warner Wine Cellars, Novato, Calif.

DESIGN DESCRIPTION

Three thousand bottles of wine line the walls of this three-story tower, which takes its inspiration from the rural buildings of the Napa Valley. The tower provides a 270-degree view of the vineyards and valley below, but is conveniently located adjacent to the main gathering room of the contemporary farmhouse. Bottles are displayed in custom racks recessed into the tower walls, which are one-foot thick and heavily insulated to maintain a constant temperature for the growing wine collection. The stair and walkway make reaching the wine convenient and lead to a covered 170-sq-ft observation deck.





BEST IN REGION

MIDWEST

Warren

East Grand Rapids, Mich.

Photography by Megan TerVeen

PROJECT TEAM

ARCHITECT/DESIGNER— Wayne Visbeen, Grand Rapids, Mich.

BUILDER— Insignia Homes, Grand Rapids, Mich.

INTERIOR DESIGNER— Francesca Owings, Grand Rapids, Mich.

DESIGN DESCRIPTION

Building a new home in an old neighborhood can present many architectural challenges. This design's exterior blends with the surrounding structures, while the floor plan takes advantage of the available space. A traditional facade combining brick, shakes and wood trim means the design fits well in any early 20th century borough. Copper accents and antique-inspired lanterns solidify the home's vintage appeal. Despite the exterior throwback, the interior of the home offers the latest in amenities and layout. Spacious dining, kitchen and hearth areas open to a comfortable back patio on the main level, while the upstairs offers a luxurious master suite and three guest bedrooms.

MID ATLANTIC

Symphony Park at Strathmore

North Bethesda, Md.

Photography by Bob Narod, Herndon, Va. & Eric Kieley, Ellicott City, Md.

PROJECT TEAM

ARCHITECT/DESIGNER— Jack McLaurin, Vienna, Va.

BUILDER— Harris Schwalb, McLean, Va.

DEVELOPER— Ron Kaplan, McLean, Va.

LAND PLANNER— Jim Soltesz, Rockville, Md.

DESIGN DESCRIPTION

The Symphony Park enclave surrounds the homes with winding pathways accented by abundant gardens. Proximity to the Strathmore Music Center attracts senior level professionals eager for cultural connections as well as easy access to

shopping and transportation. The homes also offer expansive family rooms, media rooms, breakfast rooms, terraces, formal living and dining rooms and main-level exceptional kitchens with details such as spacious center island design, gourmet stainless steel appliances, maple cabinets and abundant granite counter space. The high-tech wiring systems, Energy Star certification and dual-zone heating and air conditioning deliver comfort on-command throughout the seasons.





NORTH ATLANTIC

220 Water

Brooklyn, N.Y.

Photography by Sean Hemmerle

PROJECT TEAM

ARCHITECT/DESIGNER— Perkins Eastman, New York, N.Y.

BUILDER— The Rinaldi Group, LLC, Secaucus, N.J.

INTERIOR DESIGNER— Peggy Leung Design, New York, N.Y.

DEVELOPER— GDC Properties, LLC, Hawthorne, N.Y.

DESIGN DESCRIPTION

The historic rehabilitation of 220 Water Street created 134 spacious luxury loft rental apartment homes and residential amenities within a restored 19th century manufacturing building that used to be a shoe factory. Natural light illuminates restored accents including exterior brick walls and concrete or wood plank ceilings with original timber beams. Modern design elements include multiple well-designed closets, full-size washers and dryers, and kitchens with moveable islands accented by high-end finishes and appliances. The building offers discerning renters a collection of studio, one- and two-bedroom residences, and all 18 spacious floor plans feature 10-foot windows with custom sun shades, 14-foot ceilings and premium finishes. The building's 30-foot high, sky-lit lobby offers residents a coffee bar, gracious lounge areas and a water feature as well as access to concierge services. On-site amenities include a roof deck with fireplace, lounge chairs and barbecue grills, pet-spa room, a fitness and yoga facility adjacent to a children's playroom, on-site reserved parking, and generous private storage.

SINGLE-FAMILY

SINGLE-FAMILY

SILVER

Detached Home up to 2000 sq ft,
Home Built for Sale

Solaris at Daybreak, Plan B

South Jordan, Utah

Photography by John Bare Photography

PROJECT TEAM

ARCHITECT/DESIGNER— KTGy Group,
Inc., Irvine, Calif.

BUILDER— Garbett Homes,
Salt Lake City, Utah

INTERIOR DESIGNER— Osmond Designs,
Lehi, Utah

DEVELOPER— Garbett Homes,
Salt Lake City, Utah

LAND PLANNER— KTGy Group, Inc.,
Irvine, Calif.



GOLD

Detached Home 2001-3000 sq ft,
Built for Sale

ParkSide at RidgeGate

Lonetree, Colo.

Photography by Jay S. Simon
Photographer

PROJECT TEAM

ARCHITECT/DESIGNER— KEPHART
community::planning::architecture,
Denver, Colo.

BUILDER— Berkely Homes, Aurora, Colo.

Interior Designer— Captivating Design
Service, Denver, Colo.

DEVELOPER— Harvard Communities,
Centennial, Colo.

LAND PLANNER— KEPHART community::
planning::architecture, Denver, Colo.

INTERIOR MERCHANDISER— Captivating
Design Service, Denver, Colo.





GOLD

**Detached Home 2001-3000 sq ft,
Built for Sale**

Arista at the Crosby– Plan 1

Rancho Santa Fe, Calif.

Photography by David Harrison

PROJECT TEAM

ARCHITECT/DESIGNER– Bassenian
Lagoni, Newport Beach, Calif.

BUILDER– Davidson Communities,
Del Mar, Calif.

INTERIOR DESIGNER– Design Line
Interiors, Del Mar, Calif.

DEVELOPER– Davidson Communities,
Del Mar, Calif.

LAND PLANNER– Nolte Engineering,
San Diego, Calif.



SILVER

**Detached Home 2001-3000 sq ft,
Built for Sale**

San Remo at Laguna Altura– Plan 3

Irvine, Calif.

Photography by Eric Figge Photography

PROJECT TEAM

ARCHITECT/DESIGNER– Bassenian
Lagoni, Newport Beach, Calif.

BUILDER– Irvine Pacific,
Newport Beach, Calif.

INTERIOR DESIGNER– Austin Johnson
Interiors Irvine, Calif.

DEVELOPER– The Irvine Company,
Newport Beach, Calif.

LAND PLANNER– The Irvine Company,
Newport Beach, Calif.

SINGLE-FAMILY

SINGLE-FAMILY

PLATINUM

**Detached Home over 4001 sq ft,
Home Built for Sale**

Lakeview Single-Family Home

Chicago, Ill.

Photography courtesy of Kenneth Brinkman

PROJECT TEAM

ARCHITECT/DESIGNER— Kenneth Brinkman, Chicago, Ill.

BUILDER— Environs Development, Inc., Chicago, Ill.

INTERIOR DESIGNER— Environs Development, Inc., Chicago, Ill.

DEVELOPER— Environs Development, Inc., Chicago, Ill.

DESIGN DESCRIPTION

An urban neighborhood that embraces its eclectic character as a living, evolving community has room for both vintage homes and modern expressions of residential architecture. However, the contemporary version works better when it respects the scale and proportions of its tradition-bound neighbors. Brick, limestone and glazing have been used for generations of home building, but for this project, those materials were used in a horizontal and vertical composition with a decidedly contemporary expression. Visitors to this home enter through an eight-foot rift sawn oak front door to encounter surfaces and masses that define the spaces through natural maple floors, stainless railings, dark walnut millwork and gloss white cabinetry.



SILVER

Detached Home over 4001 sq ft, Built for Sale

Cabin John Crossing

Cabin John, Md.

Photography by Bob Narod

PROJECT TEAM

ARCHITECT/DESIGNER— GPS Designs, Kirkland, Wash.

BUILDER— OPaL, LLC, Lanham, Md.

INTERIOR DESIGNER— P Four, Lanham, Md.

DEVELOPER— OPaL, LLC, Lanham, Md.

LAND PLANNER— Dean Packard, Rockville, Md.

INTERIOR MERCHANDISER— P Four, Lanham, Md.



PLATINUM

One-of-a-Kind Home up to 4,000 sq ft

Warren

East Grand Rapids, Mich.

Photography by Megan TerVeen

PROJECT TEAM

ARCHITECT/DESIGNER— Wayne Visbeen,
Grand Rapids, Mich.

BUILDER— Insignia Homes,
Grand Rapids, Mich.

INTERIOR DESIGNER— Francesca
Owings, Grand Rapids, Mich.

DESIGN DESCRIPTION

Building a new home in an old neighborhood can present many architectural challenges. This design's exterior blends with the surrounding structures, while the floor plan takes advantage of the available space. A traditional facade combining brick, shakes and wood trim means the design fits well in any early 20th century borough. Copper accents and antique-inspired lanterns solidify the home's vintage appeal. Despite the exterior throwback, the interior of the home offers the latest in amenities and layout. Spacious dining, kitchen and hearth areas open to a comfortable back patio on the main level, while the upstairs offers a luxurious master suite and three guest bedrooms.



GOLD

One-of-a-Kind Home up to 4,000 sq ft

De Paul Single-Family Home

Chicago, Ill.

Photography by Ryan Wellinghoff

PROJECT TEAM

ARCHITECT/DESIGNER— Kenneth
Brinkman, Chicago, Ill.

BUILDER— Environs Development, Inc.,
Chicago, Ill.

INTERIOR DESIGNER— Environs
Development, Inc., Chicago, Ill.

DEVELOPER— Environs Development,
Inc., Chicago, Ill.



SINGLE-FAMILY

SILVER

One-of-a-Kind Home
up to 4,000 sq ft

Waterfront Hideaway

Gambier Island, British Columbia
Photography by Barta Photography

PROJECT TEAM

ARCHITECT/DESIGNER— Turkel Design,
Boston, Mass.

BUILDER— My House Design/Build Team,
Vancouver, British Columbia

INTERIOR DESIGNER— My House Design/
Build Team, Vancouver,
British Columbia



SILVER

One-of-a-Kind Home
up to 4,000 sq ft

Via Palermo

Winter Park, Fla.
Photography by Uneek Luxury Tours LLC

PROJECT TEAM

ARCHITECT/DESIGNER— Phil Kean
Designs, Winter Park, Fla.

BUILDER— Phil Kean Designs,
Winter Park, Fla.

INTERIOR DESIGNER— Phil Kean Designs,
Winter Park, Fla.

INTERIOR MERCHANDISER— Phil Kean
Designs, Winter Park, Fla.





PLATINUM

One-of-a-Kind Home
4001-6500 sq ft

English Angel

Kiawah Island, S.C.

Photography by Dickson Dunlap

PROJECT TEAM

ARCHITECT/DESIGNER— Wayne Windham
Architect, Kiawah Island, S.C.

BUILDER— Buffington Homes,
Johns Island, S.C.

INTERIOR DESIGNER— Kathryn
McGowan, Charleston, S.C.

LAND PLANNER— Sunnyside Designs,
Johns Island, S.C.

DESIGN DESCRIPTION

This Arts and Crafts style house draws from the most influential English architects of the early 20th century. Designed to be enjoyed by multiple families as a second home, this 4,900-sq-ft home contains three identical master suites, three bedrooms and six bathrooms. The bold stucco massing and steep roof pitches make a commanding presence, while flared roof lines and various detailed openings articulate the form. Inside, neutral colored walls accentuate richly stained woodwork. The timber trusses and the intersecting peak and arch ceiling open the living room to form a dynamic gathering space. Stained glass connects the kitchen and dining room. The open floor plan allows abundant light and views to the exterior, and also provides a sense of connection and functionality. A pair of matching staircases separates the two upper master suites, trimmed with custom balusters.

SINGLE-FAMILY

SINGLE-FAMILY

GOLD

One-of-a-Kind Home
4001-6500 sq ft

Private Residence

Osprey, Fla.

Photography by Greg Wilson Group

PROJECT TEAM

ARCHITECT/DESIGNER— Guy Peterson
Office for Architecture, Sarasota, Fla.

BUILDER— Michael K. Walker &
Associates, Inc., Sarasota, Fla.

INTERIOR DESIGNER— Robert Courtier
Designer, N.Y., N.Y.



SILVER

One-of-a-Kind Home
4001-6500 sq ft

The Meier Residence

Marana, Ariz.

Photography by Ray Albright Photography

PROJECT TEAM

ARCHITECT/DESIGNER— Soloway
Designs Inc. Architecture & Planning,
Tucson, Ariz.

BUILDER— Process Design Build LLC,
Tucson, Ariz.

INTERIOR DESIGNER— Lori Carroll &
Associates, Tucson, Ariz.

DEVELOPER— Cottonwood Properties,
Marana, Ariz.

LAND PLANNER— Cottonwood Properties,
Tucson, Ariz.

INTERIOR MERCHANDISER— Lori Carroll
& Associates, Tucson, Ariz.





PLATINUM

**One-of-a-Kind Home
over 6501 sq ft**

Lincoln Park Single-Family Home

Chicago, Ill.

Photography by Ryan Wellinghoff

PROJECT TEAM

ARCHITECT/DESIGNER— Kenneth Brinkman, Chicago, Ill.

BUILDER— Environs Development, Inc., Chicago, Ill.

INTERIOR DESIGNER— Environs Development, Inc., Chicago, Ill.

DEVELOPER— Environs Development, Inc., Chicago, Ill.

DESIGN DESCRIPTION

The vibrancy of Chicago is reflected block-by-block in the historic Lincoln Park neighborhood. The team's challenge was to marry a new construction home with the fabric of that block, which is historically designated and has not seen a new home for over 100 years. That goal dictated that the home stand out as an example of a beautifully maintained turn-of-the-century mansion while being built in 2012. The red sandstone, which was quarried in Texas; delicate window patterns; projecting gable roof; and hidden top floor balcony are hallmarks of a bygone era. The interior mixed tradition with the lifestyle of today.

SINGLE-FAMILY

SINGLE-FAMILY

PLATINUM

**One-of-a-Kind Home
over 6501 sq ft**

Old Woods Manor

Ada, Mich.

Photography by William J. Hebert

PROJECT TEAM

ARCHITECT/DESIGNER— Wayne Visbeen,
Grand Rapids, Mich.

BUILDER— Doug Sumner,
Grand Rapids, Mich.

DESIGN DESCRIPTION

A large circular driveway and serene rock garden welcome visitors to this elegant estate. Classic columns, shingle and stone distinguish the front exterior, which leads inside through a light-filled entryway. Rear exterior highlights include a natural-style pool, another rock garden and a beautiful, tree-filled lot. Inside, the large formal living room boasts coved ceiling, abundant windows overlooking the woods beyond, leaded-glass doors and dramatic Old World crown moldings. The casual and comfortable family room has coffered ceilings and an unusual wood fireplace. The dramatic library has intricate paneling, handsome beams and a peaked barrel-vaulted ceiling. Other highlights include a spacious master suite, including a large French-style master bath with his-and-hers vanities.



SILVER

**One-of-a-Kind Home
over 6501 sq ft**

Atkinson Residence

Berlin, Md.

Photography by Cheryl Nemazie Studio C

PROJECT TEAM

ARCHITECT/DESIGNER— Becker Morgan
Group, Inc., Salisbury, Md.

BUILDER— Joseph T. Dashiell Builders,
Inc., Ocean City, Md.

LAND PLANNER— Becker Morgan Group,
Inc., Salisbury, Md.



SILVER

**One-of-a-Kind Home
over 6501 sq ft**

Sweet Home Alabama

Muscle Shoals, Ala.

Photography by Patrick Hood

PROJECT TEAM

ARCHITECT/DESIGNER— Phil Kean Designs, Winter Park, Fla.



PLATINUM

Affordable Home

“Home Run” by Sego Homes

South Jordan, Utah

Photography by Dallin Corbridge

PROJECT TEAM

ARCHITECT/DESIGNER— Urban Design Associates, Pittsburgh, Pa.

BUILDER— Sego Homes, Lindon, Utah

INTERIOR DESIGNER— Brenda Corbridge, Lindon, Utah

DEVELOPER— Daybreak, South Jordan, Utah

LAND PLANNER— ArcSito Design, Inc., Salt Lake City, Utah

INTERIOR MERCHANDISER— Brenda Corbridge, Lindon, Utah

DESIGN DESCRIPTION

This project’s “home run” was in terms of sales pace and market success—15 of the homes were sold in the 10 weeks after it was unveiled. The site is in the town center of master-planned Daybreak. Across the street are restaurants, shops, and neighborhood services. Two blocks to the west is a light-rail mass-transit and a hospital. The plan targeted a price-sensitive buyer who appreciates these urban amenities including working professionals and young couple and includes architectural styles blending modern and traditional elements to transition between abutting architectures. The home is priced 40% below the level that most buyers seeking affordable homes would qualify for in that area, so it is a value with three bedrooms, a two-car garage and 1,655 sq ft.

SINGLE-FAMILY



SINGLE-FAMILY

PLATINUM

On the Boards
R&D 35' x 50' Lot

PROJECT TEAM
ARCHITECT/DESIGNER— KTGy Group, Inc., Irvine, Calif.
LAND PLANNER— KTGy Group, Inc., Irvine, Calif.

DESIGN DESCRIPTION
 The objective for this project was to create single family dwellings over attached housing for buyers who appreciate contemporary, sustainable design; flexible open floor plans that capitalize on indoor/outdoor living; and who want unparalleled access to recreation, shopping, dining, entertainment, education, employment and transit. The vertical lifestyle of the homes creates an on-grade yard area for pets and provides covered outdoor California rooms and spaces that relate to lifestyle activities typical of larger single-family homes. Transitional zones were used for entertaining that complement living areas on the second floor. More width in each home enables better living spaces on the second floor, bigger kitchens and better media areas. There also is an alley-loaded version. Options for the homes included garage configurations of tandems, two cars side-by-side or one car with carports.



GOLD

On the Boards
Cambridge

Michigan
PROJECT TEAM
ARCHITECT/DESIGNER— Wayne Visbeen, Grand Rapids, Mich.

SILVER

On the Boards
Tupper Camp

Michigan
PROJECT TEAM
ARCHITECT/DESIGNER— Wayne Visbeen, Grand Rapids, Mich.

GOLD

Adaptive Reuse

Nettleton Mansion

Kirkland, Wash.

Photography by CamWest Development

PROJECT TEAM

ARCHITECT/DESIGNER— Dahlin Group
Architecture Planning, Pleasanton,
Calif.

BUILDER— CamWest Development,
Kirkland, Wash.

INTERIOR DESIGNER— CamWest
Development, Kirkland, Wash.

DEVELOPER— CamWest Development,
Kirkland, Wash.

LAND PLANNER— Dahlin Group
Architecture Planning,
Pleasanton, Calif.

INTERIOR MERCHANDISER— CamWest
Development, Kirkland, Wash.



GOLD

Green-Built Home

Waterfront Hideaway

International

Gambier, British Columbia

Photography by Barta Photography

PROJECT TEAM

ARCHITECT/DESIGNER— Turkel Design,
Boston, Mass.

BUILDER— My House Design/Build Team,
Vancouver, British Columbia

INTERIOR DESIGNER— My House Design/
Build Team, Vancouver,
British Columbia



SINGLE-FAMILY

SINGLE-FAMILY

GOLD

International

Lagoon Manor

International

Beijing, China

Photography by Li Wen

PROJECT TEAM

ARCHITECT/DESIGNER— Dahlin Group
Architecture Planning,
Pleasanton, Calif.

BUILDER— China Construction Sixth
Engineering Division Corp.,
Beijing, China

INTERIOR DESIGNER— Shenzhen Ziren
Environmental Design Co., Ltd

DEVELOPER— Beijing Zhonghai Real
Estate Co., Ltd., Beijing, China

LAND PLANNER— Beijing Dahlin
Architecture Planning & Consultant,
Beijing, China

INTERIOR MERCHANDISER— Beijing
Dahlin Architecture Planning &
Consultant, Beijing, China



GOLD

International

Waterfront Hideaway

International

Gambier, British Columbia

Photography by Barta Photography

PROJECT TEAM

ARCHITECT/DESIGNER— Turkel Design,
Boston, Mass.

BUILDER— My House Design/Build Team,
Vancouver, British Columbia

INTERIOR DESIGNER— My House
Design/Build Team, Vancouver, British
Columbia





PLATINUM

**Attached Homes/Townhouses,
Built for Sale**

Symphony Park (Chelsea/ Knightsbridge)

Bethesda, Md.

Photography by Bob Narod & Eric Kieley

PROJECT TEAM

ARCHITECT/DESIGNER— Jack McLaurin,
Vienna, Va.

BUILDER— Harris Schwalb, McLean, Va.

Interior Designer— Jodi Macklin, Chevy
Chase, Md. & Melanie Whittington,
Arlington, Va.

DEVELOPER— Ron Kaplan, McLean, Va.

LAND PLANNER— Jim Soltesz,
Rockville, Md.

INTERIOR MERCHANDISER—

Jodi Macklin, Chevy Chase, Md. &
Melanie Whittington, Arlington, Va.

DESIGN DESCRIPTION

The Chelsea and Knightsbridge models reflect a contemporary understanding of upscale urban dwellers' needs and desires with richly detailed entry halls and hardwood flooring throughout the main level, elegant oak staircases and rooms designed for reception or studies with optional built-in features. The Symphony Park enclave surrounds the homes with winding pathways accented by abundant gardens. Proximity to the Strathmore Music Center attracts senior level professionals eager for cultural connections as well as easy access to shopping and transportation. The homes also offer expansive family rooms, media rooms, breakfast rooms, terraces, formal living and dining rooms and main-level exceptional kitchens with details such as spacious center island design, gourmet stainless steel appliances, maple cabinets and abundant granite counter space. The high-tech wiring systems, Energy Star certification and dual-zone heating and air conditioning deliver comfort on-command throughout the seasons.

MULTIFAMILY

MULTIFAMILY

PLATINUM

**Attached Homes/Townhouses,
Built for Sale**

Symphony Park (Regent/ Westminster)

Bethesda, Md.

Photography by Bob Narod and
Eric Kieley

PROJECT TEAM

ARCHITECT/DESIGNER— Jack McLaurin,
Vienna, Va.

BUILDER— Harris Schwalb, McLean, Va.

INTERIOR DESIGNER— Jodi Macklin,
Chevy Chase, Md. & Melanie
Whittington, Arlington, Va.

DEVELOPER— Ron Kaplan, McLean, Va.

LAND PLANNER— Jim Soltesz,
Rockville, Md.

INTERIOR MERCHANDISER—
Jodi Macklin, Chevy Chase, Md. &
Melanie Whittington, Arlington, Va.



DESIGN DESCRIPTION

The Regent and Westminster models at Symphony Park have been designed for senior level professionals who enjoy the art of living. The homes offer attractive design options in an upscale, urban enclave surrounded by abundant landscaping that complements the adjacent cultural center, The Music Center at Strathmore, and the Festival Lawn and Sculpture Garden. The traditional exteriors of the homes reflect old-world European quality workmanship, with richly detailed brickwork, bay windows, stone window and door features, and covered entry ways. Spacious interiors reflect contemporary living in grand style through family rooms with gas fireplaces, media rooms, studies and libraries, sitting rooms and expansive roof terraces, kitchen with breakfast room options and much more. Main levels provide smart access to formal dining and living rooms while spacious owner suites, luxury baths and sitting rooms are located on the upper level. The three-story urban homes have three to four bedrooms, two-car garages and easy access to major routes and nearby shopping and restaurants.

GOLD

**Attached Homes/Townhouses,
Built for Sale**

“Home Run” by Sego Homes

South Jordan, Utah

Photography by Dallin Corbridge

PROJECT TEAM

ARCHITECT/DESIGNER— Urban Design
Associates, Pittsburgh, Pa.

BUILDER— Sego Homes, Lindon, Utah
Interior Designer— Brenda Corbridge,
Lindon, Utah

DEVELOPER— Daybreak,
South Jordan, Utah

LAND PLANNER— ArcSito Design, Inc.,
Salt Lake City, Utah

INTERIOR MERCHANDISER—
Brenda Corbridge, Lindon, Utah





DESIGN DESCRIPTION

The historic rehabilitation of 220 Water Street created 134 spacious luxury loft rental apartment homes and residential amenities within a restored 19th century manufacturing building that used to be a shoe factory. Natural light illuminates restored accents including exterior brick walls and concrete or wood plank ceilings with original timber beams. Modern design elements include multiple well-designed closets, full-size washers and dryers, and kitchens with moveable islands accented by high-end finishes and appliances. The building offers discerning renters a collection of studio, one- and two-bedroom residences, and all 18 spacious floor plans feature 10-foot windows with custom sun shades, 14-foot ceilings and premium finishes. The building's 30-foot high, sky-lit lobby offers residents a coffee bar, gracious lounge areas and a water feature as well as access to concierge services. On-site amenities include a roof deck with fireplace, lounge chairs and barbecue grills, pet-spa room, a fitness and yoga facility adjacent to a children's playroom, on-site reserved parking, and generous private storage.



PLATINUM

**Development up to 4 Stories,
For Rent**

220 Water

Brooklyn, N.Y.

Photography by Sean Hemmerle

PROJECT TEAM

ARCHITECT/DESIGNER—

Perkins Eastman, New York, N.Y.

BUILDER— The Rinaldi Group, LLC,
Secaucus, N.J.

INTERIOR DESIGNER— Peggy Leung
Design, New York, N.Y.

DEVELOPER— GDC Properties, LLC,
Hawthorne, N.Y.

SILVER

**Development up to 4 Stories,
For Rent**

Sterling Central

Orlando, Fla.

Photography by Taylor Architectural
Photography

PROJECT TEAM

ARCHITECT/DESIGNER— Humphreys &
Partners Architects, L.P., Dallas, Texas

BUILDER— DMC Developers,
Houston, Texas

INTERIOR DESIGNER— In-House (Sterling
University Housing), Houston, Texas

DEVELOPER— Sterling University Housing,
Houston, Texas

LAND PLANNER— Humphreys & Partners
Architects, L.P., Dallas, Texas

MULTIFAMILY

MULTIFAMILY

GOLD

Development 5 Stories & Over,
For Rent

Halstead Square— The Lotus

Merrifield, Va.

Photography by Eric Taylor

PROJECT TEAM

ARCHITECT/DESIGNER— SK&I
Architectural Design Group, L.L.C.,
Bethesda, Md.

BUILDER— John Moriarty and Associates
of Virginia, LLC, Arlington, Va.

INTERIOR DESIGNER— DSF Interiors
Division, Alexandria, Va.

DEVELOPER— DSF Group, Alexandria, Va.
and Waltham, Mass.

LAND PLANNER— DSF Group,
Alexandria, Va. and Waltham, Mass.

INTERIOR MERCHANDISER—
DSF Interiors Division, Alexandria, Va.



GOLD

Development 5 Stories & Over,
For Rent

University House Central Florida

Orlando, Fla.

Photography by Taylor Architectural
Photography

PROJECT TEAM

ARCHITECT/DESIGNER— Humphreys &
Partners Architects, L.P., Dallas, Texas

BUILDER— Winter Park Construction,
Maitland, Fla.

INTERIOR DESIGNER— Gresham Smith &
Partners, Jacksonville, Fla.

DEVELOPER— Inland American
Communities, Dallas, Texas

LAND PLANNER— Humphreys & Partners
Architects, L.P., Dallas, Texas





SILVER

**Development 5 Stories & Over,
For Rent**

Flats 130 at Constitution Square

Washington, D.C.

Photography by Maxwell Mackenzie,
Todd A. Smith

PROJECT TEAM

ARCHITECT/DESIGNER— Sami Kokdil,
Bethesda, Md.

BUILDER— Clark Construction Group,
LLC, Bethesda, Md.

INTERIOR DESIGNER— SK+I,
Bethesda, Md.

DEVELOPER— Stonebridge Carras,
Washington, D.C.

MULTIFAMILY



SILVER

On the Boards

222 Hennepin

Minneapolis, Minn.

Photography by Renderings courtesy of
Ryan Companies

PROJECT TEAM

ARCHITECT/DESIGNER—

Humphreys & Partners Architects,
L.P./Ryan Companies,
Dallas, Texas/Minneapolis, Minn.

BUILDER— Ryan Companies,
Minneapolis, Minn.

DEVELOPER— Ryan Companies,
Minneapolis, Minn.

LAND PLANNER— Humphreys & Partners
Architects, L.P., Dallas, Texas

MULTIFAMILY



The historic rehabilitation of 220 Water Street created 134 spacious luxury loft rental apartment homes and residential amenities within a restored 19th century manufacturing building that used to be a shoe factory. Natural light illuminates restored accents including exterior brick walls and concrete or wood plank ceilings with original timber beams. Modern design elements include multiple well-designed closets per unit, full-size washers and dryers, and kitchens with moveable islands accented by high-end finishes and appliances. The building offers discerning renters a unique collection of studio, one- and two-bedroom residences, and all 18 spacious floor plans feature 10-foot windows with custom sun shades, 14-foot ceilings and premium finishes. The building's 30-foot high, sky-lit lobby offers residents a coffee bar, gracious lounge areas and a water feature as well as access to concierge services. On-site amenities include a manicured roof deck with fireplace, lounge chairs and barbecue grills, pet-spa room, a fitness and yoga facility adjacent to a children's playroom, on-site reserved parking and generous private storage.

MULTIFAMILY

PLATINUM

Adaptive Reuse

220 Water

Brooklyn, N.Y.

Photography by Photography by Sean Hemmerle

PROJECT TEAM

ARCHITECT/DESIGNER— Perkins Eastman, New York, N.Y.

BUILDER— The Rinaldi Group, LLC, Secaucus, N.J.

INTERIOR DESIGNER— Peggy Leung Design, Inc., New York, N.Y.

DEVELOPER— GDC Properties, LLC, Hawthorne, N.Y.

DESIGN DESCRIPTION



GOLD

Adaptive Reuse

The Foundry Lofts

Washington, D.C.

Photography by Maxwell Mackenzie

PROJECT TEAM

ARCHITECT/DESIGNER— Sami Kokdil, Bethesda, Md.

BUILDER— KBS, Washington, D.C.

INTERIOR DESIGNER— SRA and SK+I, Washington, D.C.

DEVELOPER— Forest City, Washington, D.C.

Jinshan Town Center

International

Photography by Li Wen

PROJECT TEAM

ARCHITECT/DESIGNER— Dahlin Group
Architecture Planning,
Pleasanton, Calif.

BUILDER— Jiangsu Huajian

INTERIOR DESIGNER— China Merchant
Property Development

DEVELOPER— China Merchant Property
Development

LAND PLANNER— Dahlin Group
Architecture Planning,
Pleasanton, Calif.



DESIGN DESCRIPTION

This high-density, mixed-use project combines three luxury residential towers adjacent to and on top of a private garden facing community recreation and a public street facing community commercial. The project is the centerpiece and main entry of a larger development that includes a major school campus, a townhome and villa neighborhood and more affordable residential towers. The site plan uses all available open space including a garden, patio and tennis courts atop the two-story recreation and commercial building green roofs; garden open space surrounding glass lobbies at the ground level of the residential towers; and private green roofs for penthouse units. The residential towers are a study in functional building systems. The garden-facing community recreation facilities provide overlapping glass and stone planes that bring garden views into the interior. The street-facing retail is a playful composition of forms that mimic the scale of individual businesses. The high density of the project supports public transportation while its integration supports easy walking.



MULTIFAMILY

SILVER

Community Facility

Boys & Girls Club

Photography by Paul Turang Photography

PROJECT TEAM

ARCHITECT/DESIGNER— Dahlin Group
Architecture Planning,
Solana Beach, Calif.

BUILDER— Boys & Girls Clubs of
Carlsbad, Carlsbad, Calif.

INTERIOR DESIGNER— Dahlin Group
Architecture Planning,
Solana Beach, Calif.

DEVELOPER— Boys & Girls Clubs of
Carlsbad, Carlsbad, Calif.

LAND PLANNER— Dahlin Group
Architecture Planning,
Solana Beach, Calif.



JUDGES' DISCRETIONARY

The Gee

Spokane, Wash.

Photography by Kyle Porter— Porter Works

PROJECT TEAM

ARCHITECT/DESIGNER— RnD Architects,
Coeur d'Alene, Idaho

BUILDER— ActiveWest Builders,
Coeur d'Alene, Idaho

INTERIOR DESIGNER— ActiveWest Builders,
Coeur d'Alene, Idaho

DEVELOPER— ActiveWest Development,
Coeur d'Alene, Idaho

LAND PLANNER— Cunningham Consulting, Inc.,
Coeur d'Alene, Idaho

INTERIOR MERCHANDISER— ActiveWest Builders,
Coeur d'Alene, Idaho

DESIGN DESCRIPTION

The Gee, a three-story, 14-unit, urban infill community of co-op rental housing near Gonzaga University, provides 5,830 sq ft of contemporary living in an environment that fosters chore sharing, communal cooking and interaction. The green-certified community offers homes with a dramatic façade of retractable floor-to-ceiling windows that open to the outside. A 35-foot atrium ceiling allows tenants on the second and third levels to look below. Contemporary styling includes artwork incorporated into the design, a massive industrial fan hanging from the ceiling, and industrial piping and venting pieces mounted onto the kitchen wall. A sunken media room supports interaction of residents with extra soundproofing insulation. The building has first-level radiant in-floor heat in a colored concrete slab. Each living quarter is equipped with an Energy Star programmable heating element and each level has supplemental heating/cooling mini split systems.

REMODELING

GOLD

Entire Home \$250,001 and over per unit

Vegas Views

Las Vegas, Nev.

Photography by Grossman Photography

PROJECT TEAM

ARCHITECT/DESIGNER— VanDeWall and Associates, Sioux Falls, S.D.

REMODELER— Creative Building Corporation, Sioux Falls, S.D.

INTERIOR DESIGNER— Creative Building Corporation, Sioux Falls, S.D.

INTERIOR MERCHANDISER— Creative Building Corporation, Sioux Falls, S.D.



GOLD

Addition, Indoor or Outdoor
\$150,001 & over per unit

Sunny Slope

Holland, Mich.

Photography by William J. Hebert

PROJECT TEAM

ARCHITECT/DESIGNER— Wayne Visbeen, Grand Rapids, Mich.

REMODELER— Dan Vos Construction, Ada, Mich.

INTERIOR DESIGNER— Emily VanderLaan, Grand Rapids, Mich.



GOLD

Addition, Indoor or Outdoor—
\$150,001 & over per unit

Howard Farm Caretaker House

Farmington, Pa.

Photography by Robert H. Pulliam

PROJECT TEAM

ARCHITECT/DESIGNER— Robert H. Pulliam, David Carney, Atlanta, Ga.

REMODELER— Gary Spade, Elliottsville, Pa.

INTERIOR DESIGNER— Robert H. Pulliam, Atlanta, Ga.

PLATINUM

Bath up to \$50,000 per unit

Crest Ridge

Austin, Texas

Photography by Twist Tours

PROJECT TEAM

REMODELER— Tier1 Group, LLC,
Leander, Texas

DESIGN DESCRIPTION

The homeowner for this project had to care for an elderly family member and recognized the need for an accessible master suite to address future needs and a desire to remain in the home instead of an assisted living facility. Natural lighting and existing spaces were leveraged to achieve the goal of flexibility. By eliminating the shower and tub, an ADA-compliant shower was installed, and the shower was designed around the existing skylight to provide natural lighting during the day. Motion lighting was used to prevent potential tripping hazards at night. A slip resistant tile drains quickly. Installed fixtures and features were designed for wheelchairs including an adjustable shower bar, paddle handles on sink fixtures, lowered light switches, commercial grade carpet in the master and utility area, remote control fan and lights, and a washer and dryer at wheelchair height in the master bedroom.



PLATINUM

Specialty Project

Vegas Views

Las Vegas, Nev.

Photography by Grossman Photography

PROJECT TEAM

ARCHITECT/DESIGNER— VanDeWall and Associates,
Sioux Falls, S.D.

REMODELER— Creative Building Corporation, Sioux Falls, S.D.

INTERIOR DESIGNER— Creative Building Corporation,
Sioux Falls, S.D.

INTERIOR MERCHANDISER— Creative Building Corporation,
Sioux Falls, S.D.

DESIGN DESCRIPTION

The designer of this project knew the modern staircase and hallway would be the most important elements of the interior by tying the whole house together. The goal was to turn an otherwise long and boring cave-like hallway into an interesting pathway leading to bedrooms and other living areas. The machinery used to craft the staircase was originally built to manufacturer ship hulls, capable of bending one piece of steel to make the free-standing staircase. The open glass treads made the staircase spectacular both from the front side and the rear. The automotive pearl finish with 10 coats of clear paint invites visitors to touch and feel the high-gloss finish. The staircase unloads into a sitting area made for taking in this one-of-a-kind art piece. Molded wave walls are set apart with LED lighting that can change colors depending on the mood. The recessed shelves with floating glass allow a display of collectibles.

REMODELING

REMODELING

SILVER

Specialty Project

Rosedale Rejuvenation

Austin, Texas

Photography by Angela Valek
Photography

PROJECT TEAM

ARCHITECT/DESIGNER— Jim Larson,
Austin, Texas

REMODELER— RisherMartin Fine Homes,
Austin, Texas

INTERIOR DESIGNER— Lara Britt Design,
Austin, Texas



SPECIALITY

SILVER

Design Detail

4503 Staunton

Houston, Texas

Photography courtesy of Rohe & Wright
Residential Design

PROJECT TEAM

ARCHITECT/DESIGNER— Rohe & Wright
Residential Design, Houston, Texas

BUILDER— Rohe & Wright Custom
Homes, Houston, Texas





SILVER

Neighborhood

The Solaris Collection at Daybreak

South Jordan, Utah

Photography by John Bare Photography

PROJECT TEAM

ARCHITECT/DESIGNER— KTGy Group, Inc., Irvine, Calif.

BUILDER— Garbett Homes, Salt Lake City, Utah

DEVELOPER— Garbett Homes, Salt Lake City, Utah

LAND PLANNER— KTGy Group, Inc., Irvine, Calif.



SILVER

Neighborhood

Sunset Walk

Issaquah Highlands, Wash.

Photography by Roberto Pisano

PROJECT TEAM

ARCHITECT/DESIGNER— Dahlin Group Architecture Planning, Pleasanton, Calif.

BUILDER— Pulte Homes, Kirkland, Wash.

DEVELOPER— Pulte Homes, Kirkland, Wash.

LAND PLANNER— Dahlin Group Architecture Planning, Pleasanton, Calif.

COMMUNITY

COMMUNITY

GOLD

Master Planned

Symphony Park at Strathmore

North Bethesda, Md.

Photography by Bob Narod, Herndon, Va.
& Eric Kieley, Ellicott City, Md.

PROJECT TEAM

ARCHITECT/DESIGNER— Jack McLaurin,
Vienna, Va.

BUILDER— Harris Schwalb, McLean, Va.

DEVELOPER— Ron Kaplan, McLean, Va.

LAND PLANNER— Jim Soltesz,
Rockville, Md.



GOLD

On the Boards

616 East Carson Street

Carson, Calif.

PROJECT TEAM

ARCHITECT/DESIGNER— KTG Group,
Irvine, Calif.

BUILDER— Community Dynamics, Santa
Monica, Calif.

DEVELOPER— Community Dynamics,
Santa Monica, Calif. & CityView,
Los Angeles, Calif.

LAND PLANNER— KTG Group,
Irvine, Calif. & FBH Architects,
Santa Monica, Calif.



planning area 7



SILVER

On the Boards

Robertson Ranch

Carlsbad, Calif.

PROJECT TEAM

ARCHITECT/DESIGNER— Dahlin Group
Architecture Planning,
Pleasanton, Calif.

BUILDER— Shapell Homes,
Beverly Hills, Calif.

DEVELOPER— Shapell Homes,
Beverly Hills, Calif.

LAND PLANNER— Dahlin Group
Architecture Planning,
Pleasanton, Calif.

SILVER

On the Boards

Black Diamond

Black Diamond, Wash.

PROJECT TEAM

ARCHITECT/DESIGNER— Dahlin Group
Architecture Planning,
Pleasanton, Calif.

BUILDER— Yarrowbay Holdings,
Kirkland, Wash.

DEVELOPER— Yarrowbay Holdings,
Kirkland, Wash.

LAND PLANNER— Dahlin Group
Architecture Planning,
Pleasanton, Calif.





INTERIOR DESIGN

PLATINUM

Kitchen

NCSU Chancellor Residence

Raleigh, N.C.

Photography by Dustin Peck Photography

PROJECT TEAM

ARCHITECT/DESIGNER— Marvin Malecha, Raleigh, N.C. and
Weinstein Friedlein Architects, Carrboro, N.C.

BUILDER— Ruffy Homes Inc, Cary, N.C.

INTERIOR DESIGNER— Design Lines Ltd, Raleigh, N.C.

DEVELOPER— NC State University, Raleigh, N.C.

LAND PLANNER— NC State University, Raleigh, N.C.

INTERIOR MERCHANDISER— Design Lines Ltd, Raleigh, N.C.

DESIGN DESCRIPTION

This 8,000-sq-ft residence, which is home to North Carolina State University's Chancellor and his wife, is nestled on a private lake with sweeping views. Because of the university's School of Architecture, the home needed to be both inspirational in design and built with sustainable practices, energy efficiency and in-state sourced Carolina products. At the same time, it needed the capability of welcoming very large groups, but needed dedicated private space for the family. That space is on the upper floor while the lower floor has 5,000 sq ft that can entertain up to 200 people comfortably either inside or outside. A catering preparation area was created for large functions, but the kitchen was also designed to be the heart of the family that lives there. Black marble counters, white cabinets, chrome fixtures and simple forms give the interior a familial feel with a historic touch. The soaring ceiling makes the kitchen airy and open. Stainless steel appliances and inset recessed panel doors complete the professional appeal of the kitchen.



GOLD

Kitchen

Private Residence

Delray Beach, Fla.

Photography by Kim Sargent- Sargent Architectural Photography

PROJECT TEAM

ARCHITECT/DESIGNER— Dailey Janssen Architects, West Palm Beach, Fla.

BUILDER— Paul Courchene, Boca Raton, Fla.

INTERIOR DESIGNER— Jeffrey Strasser of Marc-Michaels Interior Design, Winter Park, Fla.

LAND PLANNER— Krent Wieland, Delray Beach, Fla.

INTERIOR MERCHANDISER— Jeffrey Strasser of Marc-Michaels Interior Design, Winter Park, Fla.



PLATINUM

Specialty Room

Weiss Wine Tower

Napa, Calif.

Photography by Christopher Mayer
Photography

PROJECT TEAM

ARCHITECT/DESIGNER—

Dahlin Group Architecture Planning,
Pleasanton, Calif.

BUILDER— Grassi Construction, Inc.,
Napa, Calif.

INTERIOR DESIGNER— InDesign One,
Santa Cruz, Calif.

DEVELOPER— Joel Weiss, Fremont, Calif.
Land Planner— Dahlin Group Architecture
Planning, Pleasanton, Calif.

INTERIOR MERCHANDISER— Thomas
Warner Wine Cellars, Novato, Calif.

DESIGN DESCRIPTION

Three thousand bottles of wine line the walls of this three-story tower, which takes its inspiration from the rural buildings of the Napa Valley. The tower provides a 270-degree view of the vineyards and valley below, but is conveniently located adjacent to the main gathering room of the contemporary farmhouse. Bottles are displayed in custom racks recessed into the tower walls, which are one-foot thick and heavily insulated to maintain a constant temperature for the growing wine collection. The stair and walkway make reaching the wine convenient and lead to a covered 170-sq-ft observation deck.



INTERIORDESIGN

SILVER

Outdoor Room

Oak Lane

Piney Point Village, Texas

Photography by Steve Chenn

PROJECT TEAM

ARCHITECT/DESIGNER— Robert Dame Designs, Houston, Texas

BUILDER— Thompson Custom Homes, Houston, Texas

INTERIOR DESIGNER— The Owen Group, Houston, Texas



Design Committee would like to thank our
2013 Exclusive Corporate Sponsor AARP

AARP

and our Design Trends
Key Sponsor Sherwin Williams

